

for Simon Lindley and the Choir of St. Albans School

19. JESUS CHILD

Words and music by
JOHN RUTTER

Brisk and very light ($\text{♩} = 138$)

PIANO

p cresc. *mf* *f*

The piano introduction consists of two staves in 4/4 time. The right hand features a melodic line with eighth notes, starting on a treble clef with a key signature of one flat. The left hand provides harmonic support with chords and moving lines. Dynamics range from piano (*p*) to forte (*f*), with a crescendo leading to the *mf* and *f* markings.

mf

This system shows the piano accompaniment for the first vocal entry. It continues with two staves, maintaining the 4/4 time signature and one-flat key signature. The dynamics are marked *mf*. The right hand has a more active melodic line with eighth and sixteenth notes, while the left hand continues with a steady accompaniment.

SOPRANO
ALTO

p

1. Have you heard the sto - ry that they're tell - ing 'bout Beth - le - hem,
2. Have you heard the sto - ry of the poor hum - ble shep - herd men,

TENOR
BASS

p

1. Have_ you
2. Sit - ting

The vocal staves are arranged in two systems. The first system shows the Soprano/Alto and Tenor/Bass parts. The Soprano/Alto part is on a treble clef, and the Tenor/Bass part is on a bass clef. Both parts start with a piano (*p*) dynamic. The lyrics are: "1. Have you heard the sto - ry that they're tell - ing 'bout Beth - le - hem, 2. Have you heard the sto - ry of the poor hum - ble shep - herd men,". The second system shows the continuation of the vocal parts, with the Soprano/Alto part on a treble clef and the Tenor/Bass part on a bass clef. The lyrics are: "1. Have_ you 2. Sit - ting".

S. 1. Je - sus
A. 2. flocks at

child? -
night? -

Have you heard the sto - ry of the Je - sus child? How he
Sit - ting on the hill - side with their flocks at night? Sud - den -
heard on the sto - ry of the Je - sus child? night?
the hill - side with their flocks at night?

S. How he came from hea - ven and was born in a man - ger bed?
A. Sud - den - ly the an - gel tells them: 'Hur - ry to Beth - le - hem;

came from hea - ven and was born in a man - ger bed?
- ly the an - gel tells them: 'Hur - ry to Beth - le - hem;
How he came from hea - ven and was born in a man - ger, Ma - ry
Sud - den - ly the an - gel tells them: 'Hur - ry to Beth - le - hem; -

cresc.

Ma - ry was his vir - gin mo - ther pure and mild.
Go and find the Je - sus child, the world's new light.'
was his vir - gin mo - ther pure and mild.
Go and find the child, the world's new light.'
cresc.

A Sing al - le - lu - ia, bro - thers, sing al - le - lu - ia, sis - ters,

f Sing al - le - lu - ia, sing al - le - lu - ia,

f Sing al - le lu - ia, al - le - lu - ia,

Wor - ship the Je - sus child and praise his mo - ther mild.

mf 'Glo - ry to God on high' the an - gel hosts a - bove are sing - ing:

mf 'Glo - ry to God' the an - gel hosts are sing - ing:

mf

D.S. for Verse 2

pp

Listen to the sto-ry of the Je-sus child.

pp

pp

D.S. for Verse 2

p dolce

B Je - sus child, ly - ing at Beth - le - hem, Sleep - ing safe at

mp dolce espress. e legato

p

Hum

p

Ma - ry's knee, Save my soul and bring me to pa - ra - dise,

(hum)

cresc. - - - - *mf* - - - - *dim.* - - - -

cresc. - - - - *mp* - - - - *dim.* - - - -

Let me join the an - gels sing - ing glo - ry to thee.

mp

(hum)

p

poco rall.

C a tempo

S. *p*
Ah

A. *p*
Ah

T. *mf legato*
8
Sing al - le - lu - ia, bro - thers, sing al - le - lu - ia, sis - ters,

B. *p*
Ah

C a tempo

p

Ah

Ah

8
Wor - ship the Je - sus child and praise his mo - ther mild.

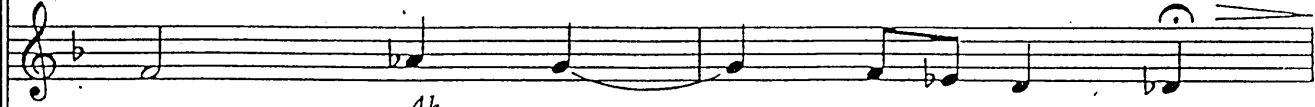
Ah

p

unis. *mp*



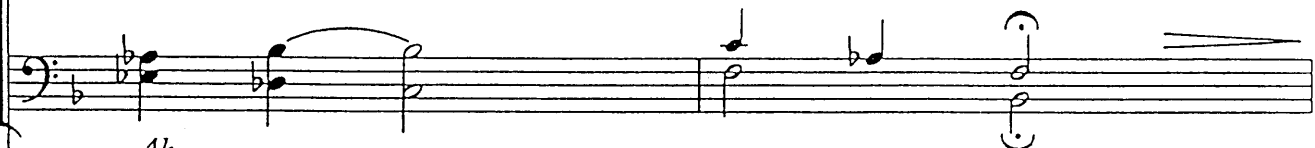
'Glo - ry to God on high' the an - gel hosts a - bove are sing - ing:



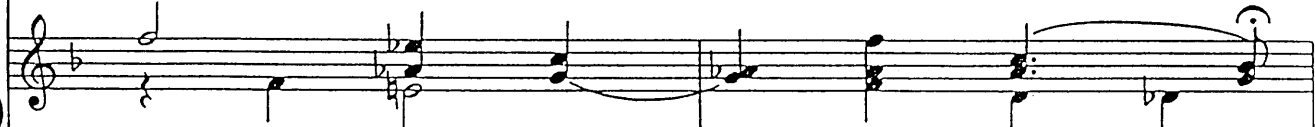
Ah



p
Ah



Ah

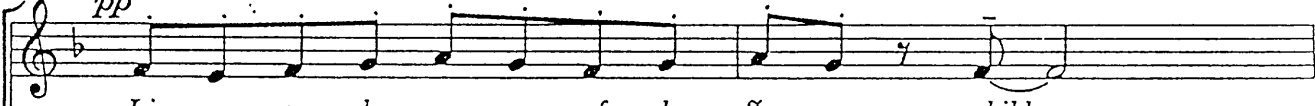


rall. - - - - -



dim. - - - - -

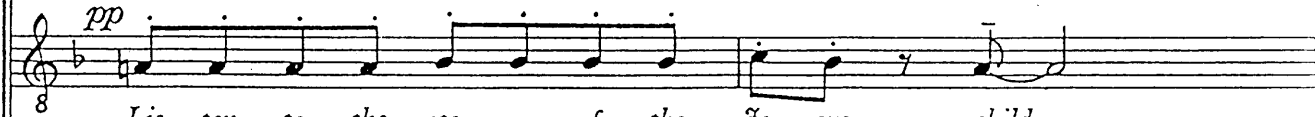
- a tempo



pp
Lis - ten to the sto - ry of the Je - sus child. - -



pp
Lis - ten to the sto - ry of the Je - sus child. - -

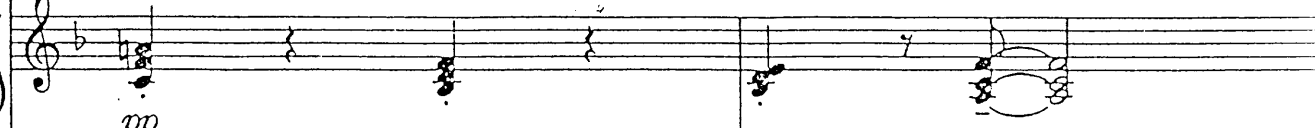


pp
Lis - ten to the sto - ry of the Je - sus child. - -



pp
Lis - ten to the sto - ry of the Je - sus child. - -

- a tempo



pp

