

# ANTONIO VIVALDI

(1678-1741)

## GLORIA

per soli, coro a 4 voci miste  
e orchestra  
a cura di

*for Solo voices, Mixed Chorus in  
4 parts and Orchestra  
edited by*

GIAN FRANCESCO MALIPIERO

Riduzione per canto e pianoforte di

*Piano reduction by*

FRANCESCO BELLEZZA

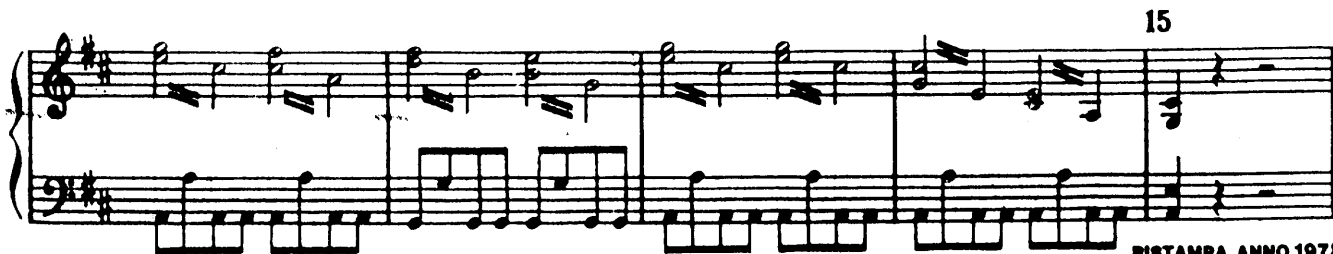
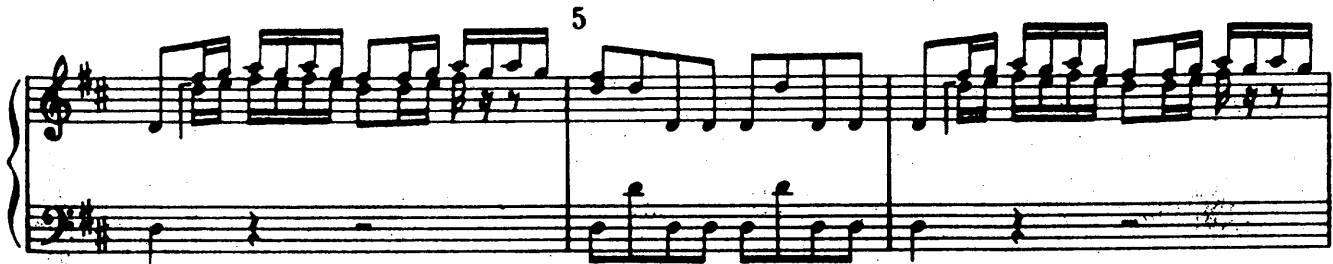
Traduzione inglese di

*English version by*

GEOFFREY DUNN

### I Gloria in excelsis Deo

**Allegro**



RISTAMPA ANNO 1978

Soprani

*f*

Glo-ri-a, glo-ri-a,  
Glo-ri-fy, glo-ri-fy,

glo-ri-a,  
glo-ri-fy,

Contralti

*f*

Glo-ri-a, glo-ri-a,  
Glo-ri-fy, glo-ri-fy,

glo-ri-a,  
glo-ri-fy,

Tenori

*f*

Glo-ri-a, glo-ri-a,  
Glo-ri-fy, glo-ri-fy,

glo-ri-a,  
glo-ri-fy,

Bassi

*f*

Glo-ri-a, glo-ri-a,  
Glo-ri-fy, glo-ri-fy,

glo-ri-a,  
glo-ri-fy,

20

glo-ri-a  
glo-ri-fy

in ex-cel-sis De-  
the Lord our God on

glo-ri-a  
glo-ri-fy

in ex-cel-sis De-  
the Lord our God on

glo-ri-a  
glo-ri-fy

in ex-cel-sis De-  
the Lord our God on

glo-ri-a  
glo-ri-fy

in ex-cel-sis De-  
the Lord our God on

25

*p*

- o, in ex - cel - sis De - o.  
 High. Glo - ry in the high - est.

- o, in ex - cel - sis De - o.  
 High. Glo - ry in the high - est.

- o, in ex - cel - sis De - o.  
 High. Glo - ry in the high - est.

- o, in ex - cel - sis De - o.  
 High. Glo - ry in the high - est.

*p*

30

*f*

Glo - ri - a, glo - ri - a, glo - ri - a, glo - ri -  
 Glo - ri - fy, glo - ri - fy, glo - ri - fy, glo - ri -

Glo - ri - a, glo - ri - a, glo - ri - a, glo - ri -  
 Glo - ri - fy, glo - ri - fy, glo - ri - fy, glo - ri -

Glo - ri - a, glo - ri - a, glo - ri - a, glo - ri -  
 Glo - ri - fy, glo - ri - fy, glo - ri - fy, glo - ri -

Glo - ri - a, glo - ri - a, glo - ri - a, glo - ri -  
 Glo - ri - fy, glo - ri - fy, glo - ri - fy, glo - ri -

*f*

- a in ex cel sis De o.  
*fy* the Lord our God most high.

*f*  
 Glo - ri - a, glo - ri - a  
 Glo - ri - fy, glo - ri - fy

*f*  
 Glo - ri - a, glo - ri - a  
 Glo - ri - fy, glo - ri - fy

*f*  
 Glo - ri - a, glo - ri - a  
 Glo - ri - fy, glo - ri - fy

*f*  
 Glo - ri - a, glo - ri - a  
 Glo - ri - fy, glo - ri - fy

*p* *f*

in ex - cel -  
in the high -

in ex - cel -  
in the high -

in ex - cel -  
in the high -

in ex - cel -  
in the high -

The musical score for measures 40-44 consists of four vocal staves (Soprano, Alto, Tenor, Bass) and a piano accompaniment. The lyrics are "in ex - cel - in the high -". The piano part features a steady eighth-note accompaniment in the left hand and chords in the right hand.

sis De -  
est Our

sis De -  
est Our

sis De -  
est Our

sis De -  
est Our

The musical score for measures 45-49 consists of four vocal staves (Soprano, Alto, Tenor, Bass) and a piano accompaniment. The lyrics are "sis De - est Our". The piano part continues with a steady eighth-note accompaniment in the left hand and chords in the right hand.

o.  
God. Glo - ri - a in ex - cel - sis,  
Glo - ry to God the high - est,

o.  
God. Glo - ri - a in ex - cel - sis,  
Glo - ry to God the high - est,

o.  
God. Glo - ri - a in ex - cel - sis,  
Glo - ry to God the high - est,

o.  
God. Glo - ri - a in ex - cel - sis,  
Glo - ry to God the high - est,

glo - ri - a in ex - cel - sis De o.  
glo - ry to God the high - est Our God.

glo - ri - a in ex - cel - sis De o.  
glo - ry to God the high - est Our God.

glo - ri - a in ex - cel - sis De o.  
glo - ry to God the high - est Our God.

glo - ri - a in ex - cel - sis De o.  
glo - ry to God the high - est Our God.

Glo - ri - a in ex - cel - sis De - o,  
 Glo - ry to God the high - est our God,

Glo - ri - a in ex - cel - sis De - o,  
 Glo - ry to God the high - est our God,

Glo - ri - a in ex - cel - sis De - o,  
 Glo - ry to God the high - est our God,

Glo - ri - a in ex - cel - sis De - o,  
 Glo - ry to God the high - est our God,

The piano accompaniment consists of a treble and bass clef with a key signature of one sharp (F#) and a 4/4 time signature. It features a steady eighth-note bass line and a more active treble line with chords and melodic fragments.

in ex - cel -  
 in the high -

in ex - cel -  
 in the high -

in ex - cel -  
 in the high -

in ex - cel -  
 in the high -

The piano accompaniment continues with a consistent eighth-note bass line and treble accompaniment, providing harmonic support for the vocal lines.

65

- - - - - sis, \_\_\_\_\_ glo - ri - a in ex - celsis  
 - - - - - est, \_\_\_\_\_ glo - ri - fy glo - ri - fy the

- - - - - sis, \_\_\_\_\_ glo - ri - a in ex - celsis  
 - - - - - est, \_\_\_\_\_ glo - ri - fy glo - ri - fy the

- - - - - sis, \_\_\_\_\_ glo - ri - a in ex - celsis  
 - - - - - est, \_\_\_\_\_ glo - ri - fy glo - ri - fy the

- - - - - sis, \_\_\_\_\_ glo - ri - a in ex - celsis  
 - - - - - est, \_\_\_\_\_ glo - ri - fy glo - ri - fy the

70

De - o.  
 high - est.

De - o.  
 high - est.

De - o.  
 high - est.

De - o.  
 high - est.